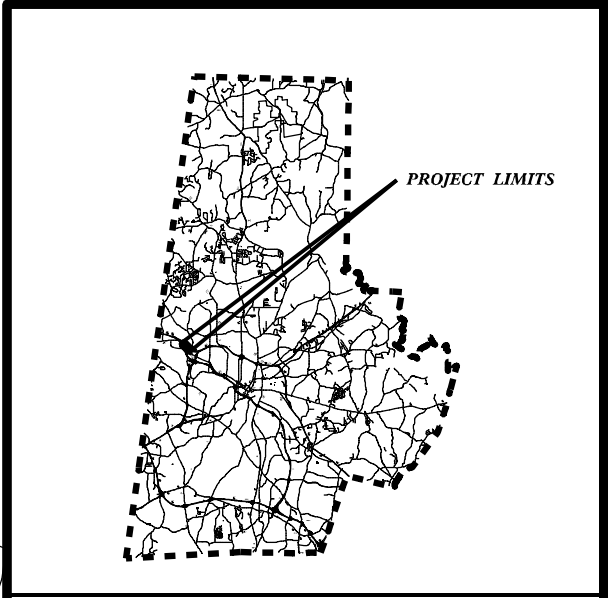
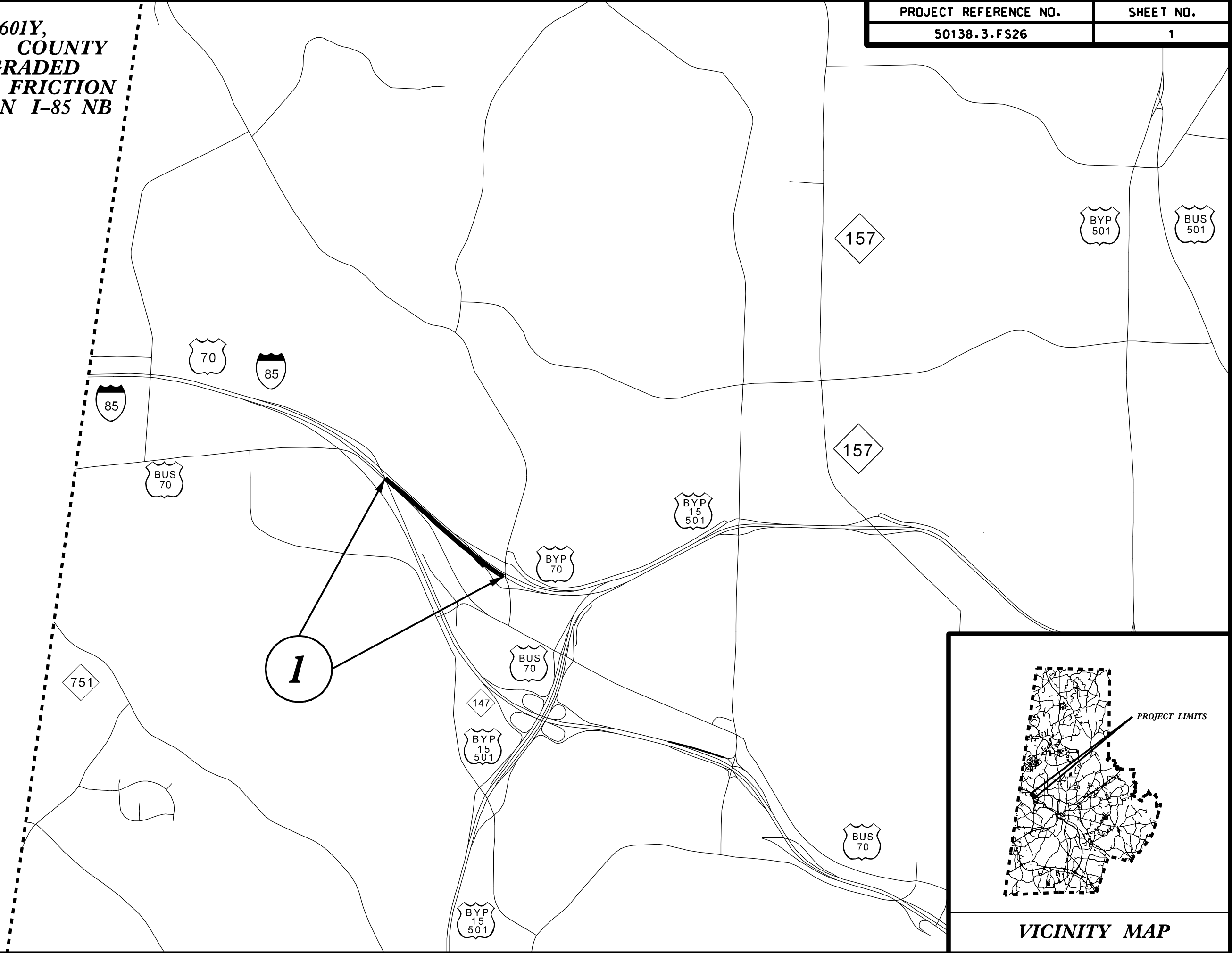


**W-5601Y,  
DURHAM COUNTY  
OPEN GRADED  
ASPHALT FRICTION  
COURSE ON I-85 NB**

PROJECT REFERENCE NO.	SHEET NO.
50138.3.FS26	1



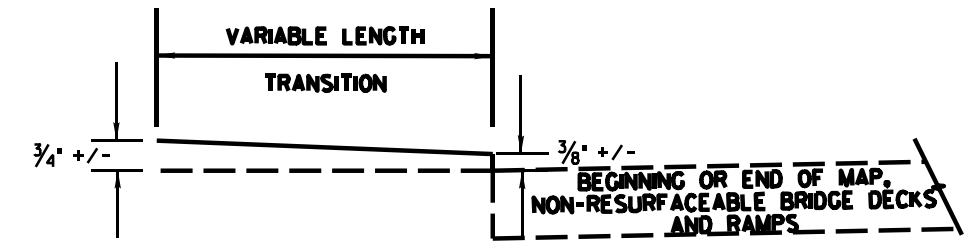
**VICINITY MAP**

# PAVEMENT SCHEDULE

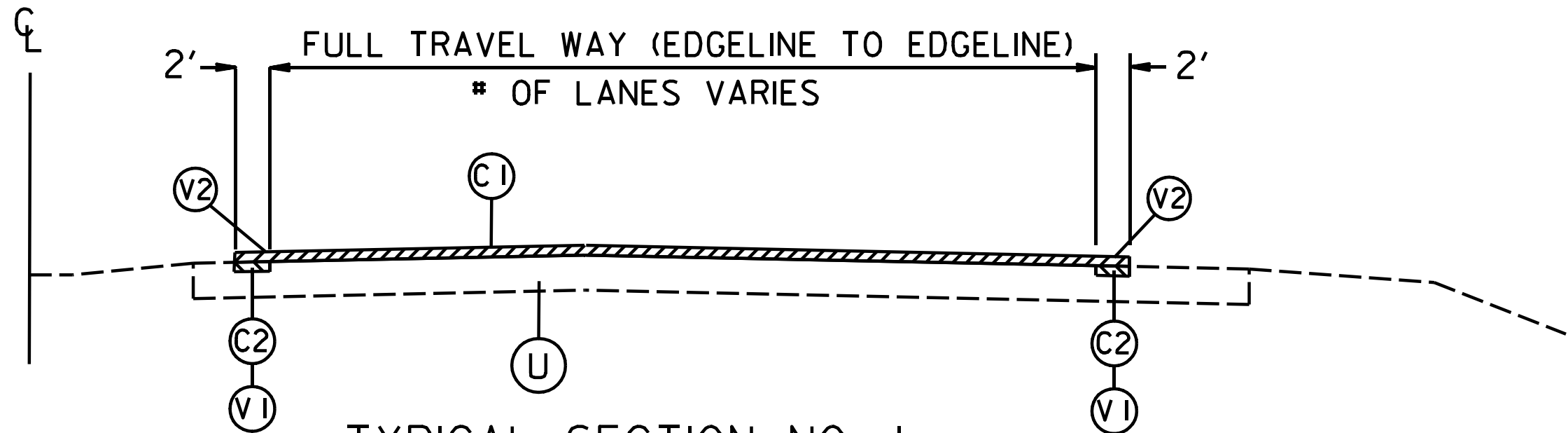
PROJECT REFERENCE NO.  
50138.3.FS26

SHEET NO.  
2

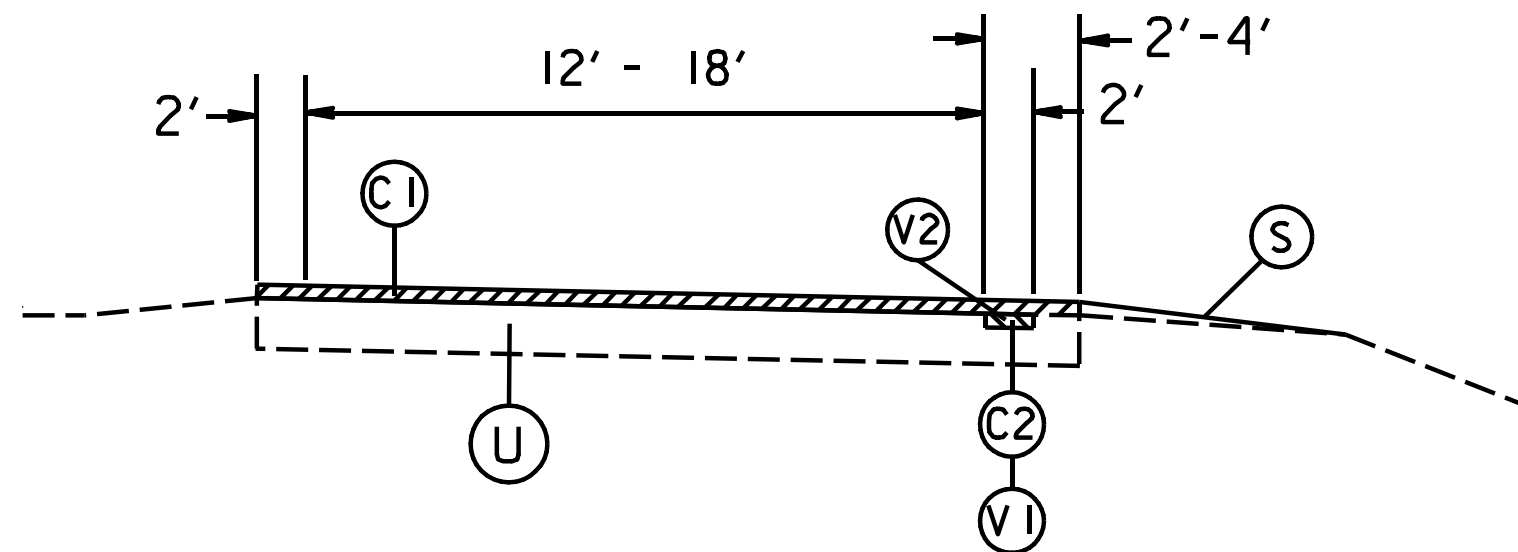
(C1)	PROP. APPROX. 3/4" OPEN GRADED FRICTION COURSE, TYPE FC-1 MODIFIED, AT AN AVERAGE RATE OF 84 LBS. PER SQ. YD.
(C2)	PROP. APPROX. 1-1/2" ASPH. CONC. SURFACE COURSE, TYPE S9.5B, AT AN AVERAGE RATE OF 168 LBS. PER SQ. YD.
(S)	SHOULDER RECONSTRUCTION
(V1)	MILL 1 1/2" IN DEPTH
(V2)	MILLED RUMBLE STRIPS
(U)	EXISTING PAVEMENT



TRANSITION AREA AT BEGINING OR END OF MAP,  
NON-RESURFACEABLE BRIDGE DECKS AND RAMPS  
(USE OGAFC, TYPE FC-1 MODIFIED AS PER SECTION 650)



TYPICAL SECTION NO. 1



RAMP TYPICAL SECTION NO. 2

PROJECT NO.	SHEET NO.	TOTAL NO.
50138.3.FS26		

### SUMMARY OF QUANTITIES

PROJECT NO	COUNTY	MAP NO	ROUTE	DESCRIPTION	TYP NO	LANES	LANE TYPE	FINAL SURFACE TESTING REQUIRED	WARM MIX ASPHALT REQUIRED	LENGTH MI	WIDTH FT	BORROW CY	SHOULDER RECONSTRUCTION SMI	1½" MILLING SY	SURFACE COURSE, S9.5B TONS	ASPHALT BINDER FOR PLANT MIX TON	POLYMER MODIFIED ASPHALT BINDER FOR PLANT MIX TON	OPEN-GRADED ASPHALT FRICTION COURSE, TYPE FC-1 MODIFIED TON	MILLED RUMBLE STRIPS (ASPHALT CEMENT CONCRETE) LF	PORTABLE LIGHTING LS	SEED & MULCHING AC
50138.3.FS26	Durham	1	I-85 NB	NC147 OVERPASS BRG TO SR 1401 - COLE MILL RD BRG	1, 2	2		NO	NO	0.654	40	10	0.09	1,533	129	8	47	777	6,895	1.00	0.07
<b>TOTAL FOR MAP NO. 1</b>										<b>0.654</b>		<b>10</b>	<b>0.09</b>	<b>1,533</b>	<b>129</b>	<b>8</b>	<b>47</b>	<b>777</b>	<b>6,895</b>	<b>1.00</b>	<b>0.07</b>
<b>TOTAL FOR PROJ NO. DE00111</b>										<b>0.654</b>		<b>10</b>	<b>0.09</b>	<b>1,533</b>	<b>129</b>	<b>8</b>	<b>47</b>	<b>777</b>	<b>6,895</b>	<b>1.00</b>	<b>0.07</b>
<b>GRAND TOTAL</b>										<b>0.654</b>		<b>10</b>	<b>0.09</b>	<b>1,533</b>	<b>129</b>	<b>8</b>	<b>47</b>	<b>777</b>	<b>6,895</b>	<b>1.00</b>	<b>0.07</b>

### THERMOPLASTIC AND PAINT QUANTITIES

PROJECT NO	COUNTY	MAP NO	ROUTE	DESCRIPTION	TYP NO	LANES	LANE TYPE	LENGTH	WIDTH	4413000000-E	4457000000-N	4510000000-N	4688000000-E		4690000000-E	4700000000-E	4905000000-N
										WORK ZONE ADVANCE/GENERAL WARNING SIGNING SF	TEMPORARY TRAFFIC CONTROL LS	LAW ENFORCEMENT HR	6" X 90 M YELLOW THERMO LF	6" X 90 M WHITE THERMO LF	6" X 120 M WHITE THERMO LF	12" X 90 M WHITE THERMO LF	SNOW PLOWABLE MARKERS EA
50138.3.FS26	Durham	1	I-85 NB	NC147 OVERPASS BRG TO SR 1401 - COLE MILL RD BRG	1, 2	2		0.654	40	32	1	20	3,435	3,435	1,835	597	116
<b>TOTAL FOR MAP NO. 1</b>								<b>0.654</b>		<b>32</b>	<b>1</b>	<b>20</b>	<b>3,435</b>	<b>3,435</b>	<b>1,835</b>	<b>597</b>	<b>116</b>
<b>TOTAL FOR PROJ NO. DE00111</b>								<b>0.654</b>		<b>32</b>	<b>1</b>	<b>20</b>	<b>3,435</b>	<b>3,435</b>	<b>1,835</b>	<b>597</b>	<b>116</b>
<b>GRAND TOTAL</b>								<b>0.654</b>		<b>32</b>	<b>1</b>	<b>20</b>	<b>3,435</b>	<b>3,435</b>	<b>1,835</b>	<b>597</b>	<b>116</b>

**DIVISION OF HIGHWAYS  
STATE OF NORTH CAROLINA**

***SOIL STABILIZATION TIMEFRAMES***

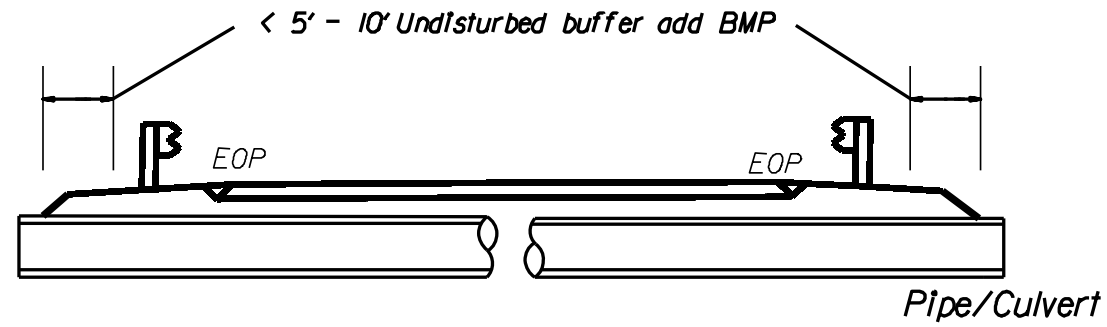
<i>SITE DESCRIPTION</i>	<i>STABILIZATION TIME</i>	<i>TIMEFRAME EXCEPTIONS</i>
<b>PERIMETER DIKES, SWALES, DITCHES AND SLOPES</b>	<b>7 DAYS</b>	<b>NONE</b>
<b>HIGH QUALITY WATER (HOW) ZONES</b>	<b>7 DAYS</b>	<b>NONE</b>
<b>SLOPES STEEPER THAN 3:1</b>	<b>7 DAYS</b>	<b>IF SLOPES ARE 10' OR LESS IN LENGTH AND ARE NOT STEEPER THAN 2:1, 14 DAYS ARE ALLOWED.</b>
<b>SLOPES 3:1 OR FLATTER</b>	<b>14 DAYS</b>	<b>7 DAYS FOR SLOPES GREATER THAN 50' IN LENGTH.</b>
<b>ALL OTHER AREAS WITH SLOPES FLATTER THAN 4:1</b>	<b>14 DAYS</b>	<b>NONE, EXCEPT FOR PERIMETERS AND HOW ZONES.</b>

NOTES: Less than 5' - 10' undisturbed buffer from ROW, ditchline, water feature, or drainage inlet, add BMP.

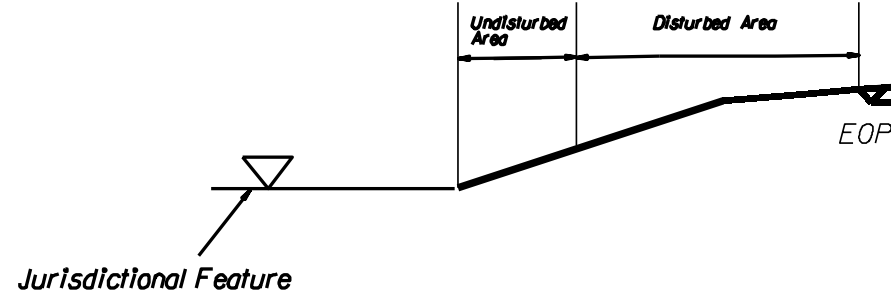
BMP Options: Wattle, Silt Fence, or Hardened Aggregate.

# EROSION CONTROL DETAIL

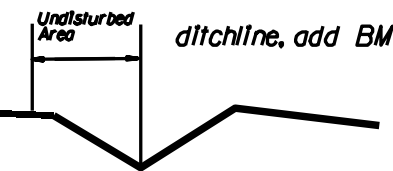
PROJECT REFERENCE NO. <b>2-1112</b>	SHEET NO. <b>16-17/2012</b>
RDW SHEET NO. ROADWAY DESIGN ENGINEER	HYDRAULICS ENGINEER



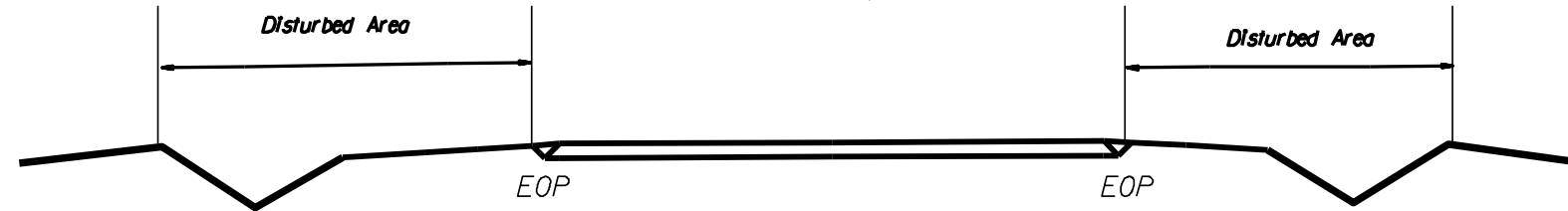
< 5' - 10' Undisturbed buffer from jurisdictional feature add BMP



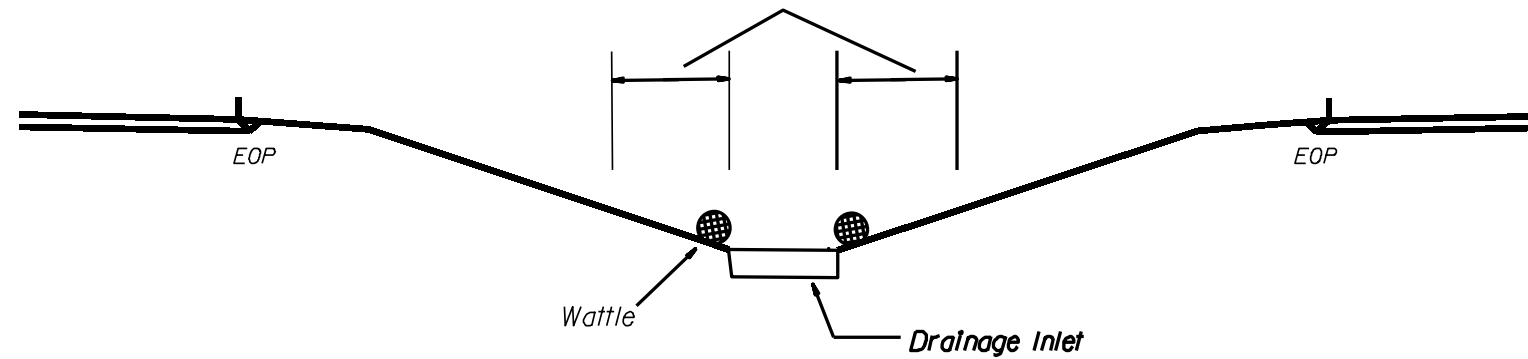
< 5' - 10' Undisturbed buffer from ditchline, add BMP



Use BMP's if shoulders and/or front slopes and/or ditchline and/or back slopes are disturbed

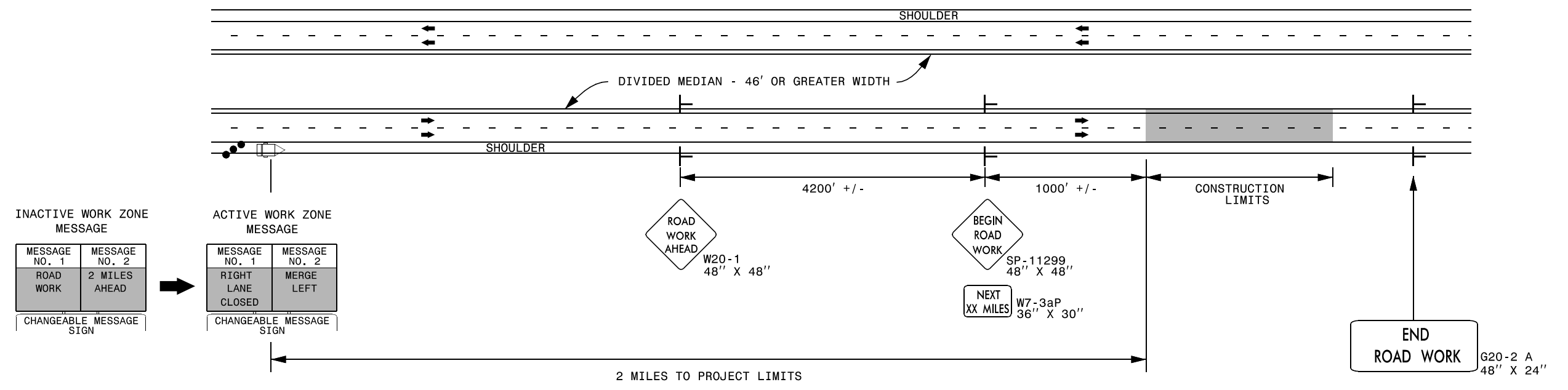


< 5' - 10' Undisturbed buffer from Inlet, add wattle

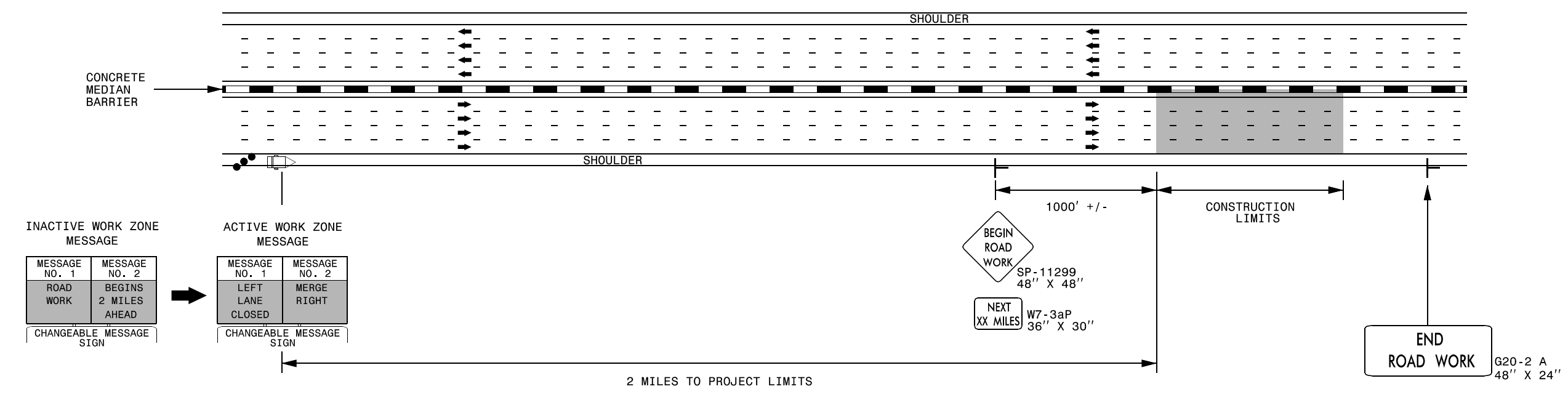


NOT TO SCALE

## DIVIDED MEDIANS WITH WIDTHS 46' OR GREATER



## DIVIDED MEDIANS WITH WIDTHS LESS THAN 46' OR WITH PERMANENT MEDIAN BARRIER

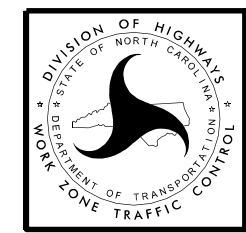


### NOTES:

- 1) LATERAL CLEARANCE AT ALL SIGN LOCATIONS SHALL BE 6' AS MEASURED FROM THE EDGE OF PAVEMENT.
- 2) MOUNT SIGNS THAT ARE LARGER THAN 10 SQUARE FEET IN AREA ON TWO OR MORE WOOD OR U-CHANNEL SUPPORTS. PERFORATED SQUARE TUBING SUPPORT SYSTEMS MAY SUPPORT LARGER AREAS ON A SINGLE SUPPORT. FOLLOW MANUFACTURER'S RECOMMENDATIONS. THESE SYSTEMS SHALL BE NCHRP 350 COMPLIANT AND NCDOT APPROVED.
- 3) FOR MEDIAN WIDTHS LESS THAN 46' (MEASURED EDGELINE TO EDGELINE) USE THE BOTTOM DRAWING.
- 4) IF STATIONARY GENERAL WARNING SIGNS ARE USED, THEY WILL BE PAID FOR PER SECTION 104 OF THE NCDOT STANDARD SPECIFICATIONS AS EXTRA WORK.
- 5) INSTALL "ROAD WORK AHEAD" (W20-1) ALONG ENTRANCE RAMP 500' PRIOR TO RAMP TERMINAL, AND "END ROAD WORK" (G20-2a) AT THE END OF EXIT RAMP WITHIN THE WORK ZONE.
- 6) IF MILLED AREAS ARE NOT PAVED BACK BY THE END OF THE WORK DAY, PORTABLE SIGNS SHALL BE USED TO WARN DRIVERS OF THE PRESENT CONDITIONS. THESE ARE TO INCLUDE, BUT NOT LIMITED TO "ROUGH ROAD" W8-8, "UNEVEN LANES" W8-11, "GROOVED PAVEMENT" W8-15 w/MOTORCYCLE PLAQUE MOUNTED BELOW. THESE ARE TO BE DOUBLE INDICATED ON MULTI-LANE ROADWAYS WITH SPEED LIMITS 45 MPH AND GREATER AND WITH DIVIDED MEDIANS OF 46' OR GREATER. THESE PORTABLE SIGNS ARE INCIDENTAL TO THE OTHER ITEMS OF WORK INCLUDED IN THE TEMPORARY TRAFFIC CONTROL (LUMP SUM) PAY ITEM.

### LEGEND

- CHANGEABLE MESSAGE SIGN (CMS)
- STATIONARY SIGN
- DIRECTION OF TRAFFIC FLOW
- TRAFFIC DRUM



**RESURFACING ADVANCE  
WARNING SIGNS FOR  
HIGH SPEED FACILITIES  
≥ 60 MPH**

I:\3\2013\SATML\WZTC\Resurf-facing\2013\Documents\New\_Procedures\_05\_09\_2013\Resurf-facing\_AdvWarn\_HSpd.dgn  
 User:fmarr.ett